

zeb1422

Gwaelod Y Maes
Llangennech

PL027

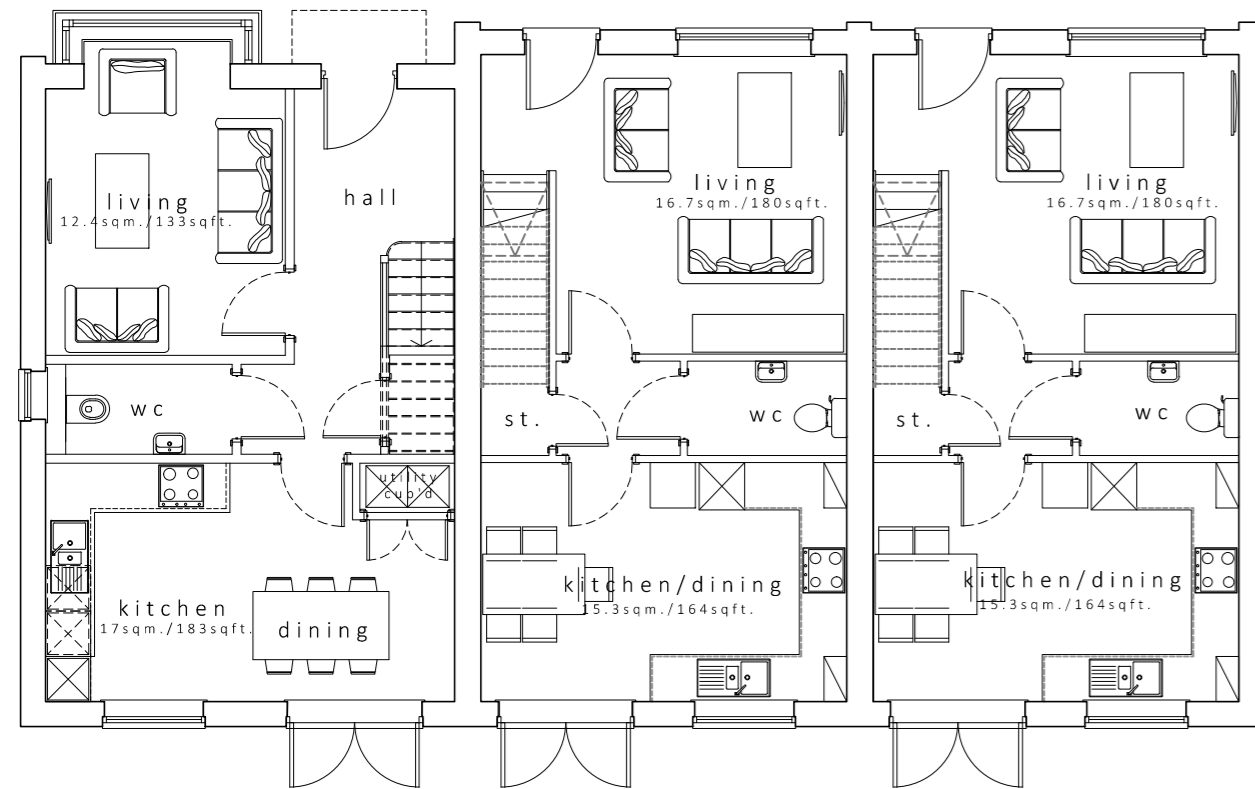
House type H
Plans and elevations

date March 20

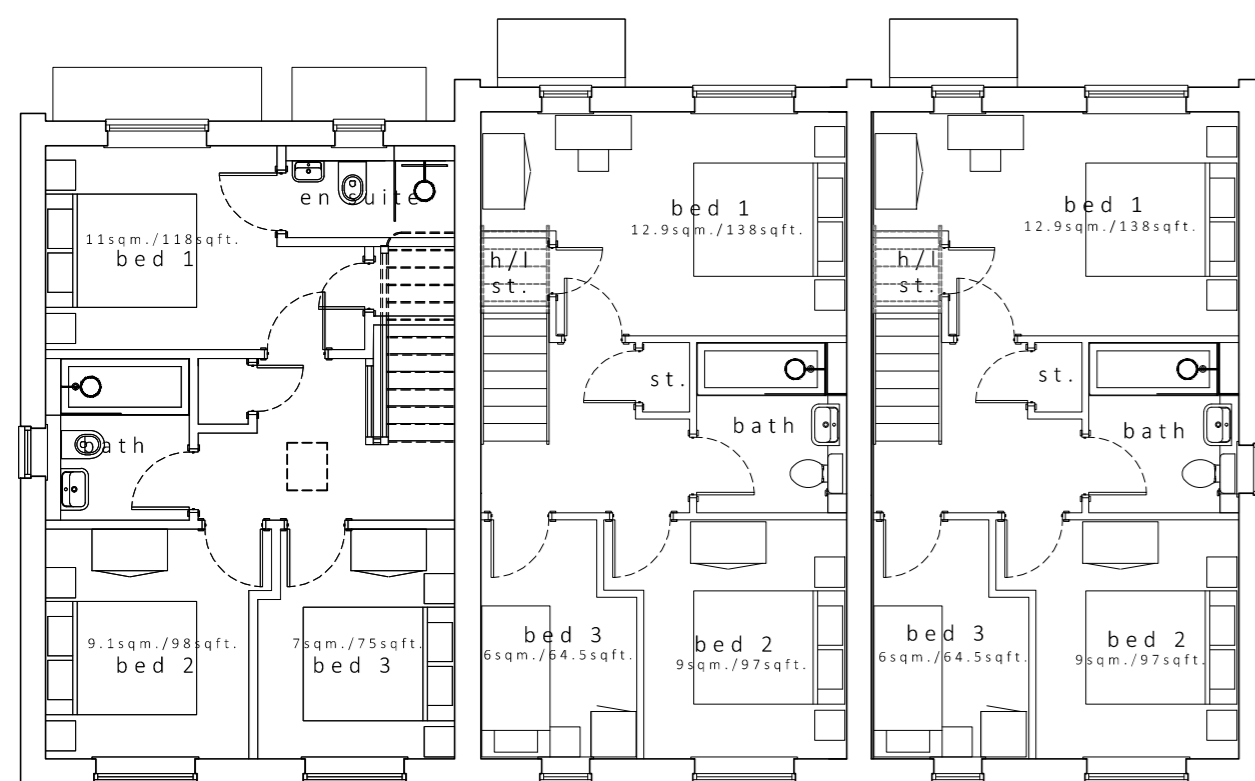
status planning

rev **F**

A	elevations amended	04/05/20
B	general amendments	22/07/20
C	internal amendments following drainage comments	03/09/20
D	Materials added	03/02/21
E	Updated to client's comments	10/02/21
F	Joined with house type A	22/02/22



Ground Floor Plan



First Floor Plan



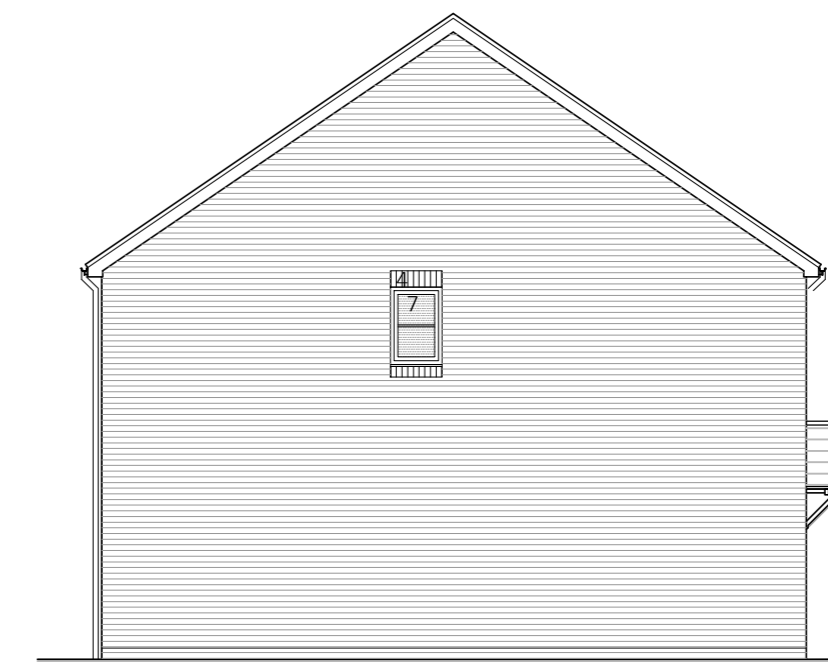
Front Elevation



Rear Elevation



Side Elevation

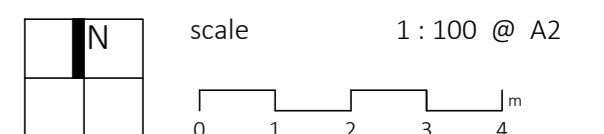


Side Elevation

Material Schedule

1. Brickwork - choice of two below.
2. Weather boarding - Cedar or similar approved.
3. Roof Tiles - Marley Modern smooth grey or similar approved.
4. Brickwork heads and cills
5. Recast Stone heads and cills
6. PCV-U Window - anthracite grey
7. PCV-U Window - white
8. Composite PVC-U Door
9. PVC-U rainwater goods
10. Oak porches
11. Black fascia and soffit.
12. 2kw in-roof black solar PV system

Brick choice as follows:
a) Weiberger 'Hathaway Brindled' or similar approved.
b) Weiberger 'Kassandra multi' or similar approved.



zebra architects ltd. is part of zebra group consulting ltd.

zebra architects ltd | c2, perdiswell park | worcester | wr3 7nw
hello@zebraarchitects.co.uk | 01905 351 472

Ordnance Survey (c) Crown Copyright. All rights reserved. Licence number 100022432

Copyright is reserved by Zebra Architects and the drawing is issued on the condition that it is not copied either wholly or in part without first obtaining written consent from them. Do not scale from this drawing, figured dimensions only to be used. All dimensions to be checked on site before commencement of any work, shop drawings or the ordering of materials. This drawing is to be read in conjunction with appropriate consultant engineers drawings, schedules, specification and manufacturer's information.

