

DRAINAGE STRATEGY NOTES

SURFACE WATER STRATEGY

- GOLDMIX LTD PREPARED A FLOOD RISK ASSESSMENT REPORT IN SUPPORT OF THE HYBRID PLANNING APPLICATION FOR A COMMERCIAL BUSINESS PARK ON LAND AT HONITON ROAD, CULLOMPTON DATED AUGUST 2020, REPORT REFERENCE 900.
- THE PRIMARY OBJECTIVE OF ANY SURFACE WATER DRAINAGE STRATEGY IS TO MIMIC THE DRAINAGE CHARACTERISTICS OF THE EXISTING SITE AS FAR AS PRACTICABLE IN THE FUTURE DEVELOPMENT. CIRIA C753 ADVISES THAT SURFACE WATER DISPOSAL SHOULD BE PRIORITISED IN THE FOLLOWING ORDER:
 - INFILTRATION
 - DISCHARGE TO SURFACE WATERS
 - DISCHARGE TO A SURFACE WATER DRAINAGE SYSTEM
 - DISCHARGE TO A COMBINED SEWER
- AS PART OF THE INITIAL SITE INVESTIGATION REFERENCED IN THE FRA BY GOLDMIX LTD, INFILTRATION IS DEEMED AS AN UNVIABLE SURFACE WATER DISPOSAL STRATEGY FOR THIS DEVELOPMENT SITE.
- THE REFERENCED HYBRID APPLICATION DETAILS THE INTERNAL HIGHWAY INFRASTRUCTURE REQUIRED TO SERVE THIS APPLICATION SITE PROVIDING A POSITIVE DRAINAGE SYSTEM DISCHARGING INTO THE RIVER KEN AT AN ATTENUATED RATE. THE STRATEGY OUTLINES AN ALLOWANCE WITHIN THE MAIN SYSTEM FOR A GREENFIELD CONNECTION FROM EACH DEVELOPMENT PLOT.
- BASED ON A GREENFIELD RUNOFF RATE OF 7.7LIT/SEC/HA AS PRESENTED IN TABLE 4.1 OF THE FRA, AND A DEVELOPMENT CONTRIBUTING AREA OF 0.85HA, THE PROPOSED DISCHARGE RATE FOR THIS APPLICATION SITE IS 6.5LIT/SEC.
- AN ATTENUATION TANK OF ~570M3 IS REQUIRED TO SERVE THE PROPOSED DEVELOPMENT AS NOTED ON PLAN.
- DUE TO THE NATURE OF THE SITE, AN OIL AND FUEL SEPARATOR IS PROPOSED TO MANAGE WATER QUALITY FOR HIGH-RISK AREAS. IN ACCORDANCE WITH CIRIA (C753), FLOW THROUGH PERMEABLE SURFACING (PAVING/ ASPHALT) WILL PROVIDE THE REQUIRED TREATMENT FOR THE STAFF AND VISITORS CAR PARKING AREA.

FOUL DRAINAGE STRATEGY

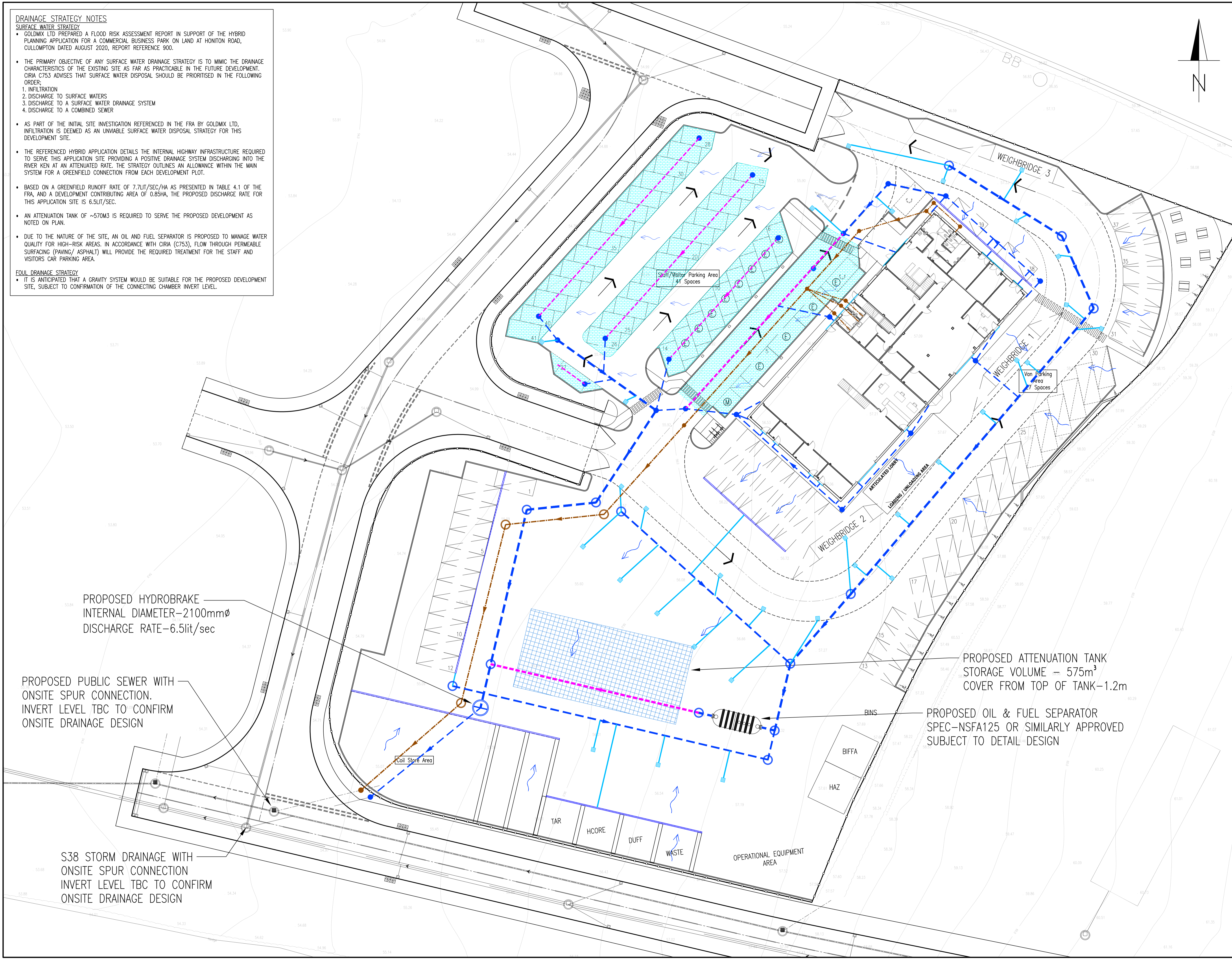
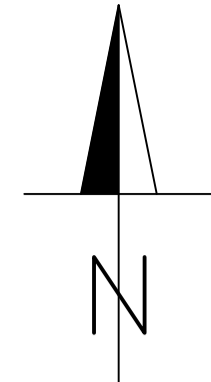
- IT IS ANTICIPATED THAT A GRAVITY SYSTEM WOULD BE SUITABLE FOR THE PROPOSED DEVELOPMENT SITE, SUBJECT TO CONFIRMATION OF THE CONNECTING CHAMBER INVERT LEVEL.

GENERAL NOTES

- DO NOT SCALE THIS DRAWING.
- CONTRACTOR TO CHECK ALL DIMENSIONS AND REPORT ALL ERRORS AND OMISSIONS TO THE ENGINEER.
- ANY DISCREPANCY TO BE REPORTED IMMEDIATELY TO THE ENGINEER.
- THIS DRAWING TO BE READ IN CONJUNCTION WITH ALL RELEVANT ARCHITECTS, SUBCONTRACTORS AND SPECIALISTS DRAWINGS AND SPECIFICATIONS.

KEY

- PROPOSED PERMEABLE TARMAC WITH MIN. 350mm DEEP TYPE 3 SUBBASE
- PRIVATELY MAINTAINABLE SURFACE WATER DRAINAGE
- PRIVATELY MAINTAINABLE PERFORATED PIPE
- PRIVATELY MAINTAINABLE FOUL WATER DRAINAGE
- ROAD GULLY AND 150mmØ TAIL
- LINEAR DRAINAGE CHANNELS AND 150mmØ TAIL
- THRESHOLD DRAINAGE CHANNELS AND 150mmØ TAIL, SPEC-ACO RAINDRAIN A15 OR SIMILARLY APPROVED
- CELLULAR SURFACE WATER ATTENUATION STRUCTURE
- SURFACE WATER FLOW PATH



PROPOSED HYDROBRAKE
INTERNAL DIAMETER-2100mmØ
DISCHARGE RATE-6.5lit/sec

PROPOSED PUBLIC SEWER WITH
ONSITE SPUR CONNECTION.
INVERT LEVEL TBC TO CONFIRM
ONSITE DRAINAGE DESIGN

S38 STORM DRAINAGE WITH
ONSITE SPUR CONNECTION
INVERT LEVEL TBC TO CONFIRM
ONSITE DRAINAGE DESIGN

PROPOSED ATTENUATION TANK
STORAGE VOLUME = 575m³
COVER FROM TOP OF TANK-1.2m

PROPOSED OIL & FUEL SEPARATOR
SPEC-NSFA125 OR SIMILARLY APPROVED
SUBJECT TO DETAIL DESIGN

Rev.	Detail	By	Date
B	DRAINAGE STRATEGY AMENDED TO REFLECT UPDATED ARCHITECT LAYOUT.	DH	03.03.23
A	DRAINAGE STRATEGY AMENDED TO REFLECT UPDATED ARCHITECT LAYOUT.	DH	02.03.23

Revisions
Reinforcement schedules nos.



Structural & Civil Engineering Consultants
First Floor
7 St James Crescent
Swansea
SA1 6DP
Telephone +44 1792 473 182
e-mail admin@cb3consult.co.uk
web www.cb3consult.co.uk

Client
WALES & WEST UTILITIES

Project
**WALES & WEST UTILITIES
PROPOSED DEPOT AT
HONITON ROAD,
CULLOMPTON**

Drawing Title
**DRAINAGE STRATEGY
PLAN**

PLANNING

Project No.	Drawing No.
C1701	C-SK01
Scales 1:250	Date 19.08.22
Drawn SG	Checked DH
Sheet Size A1	Revision B

© This drawing may not be copied without prior written permission