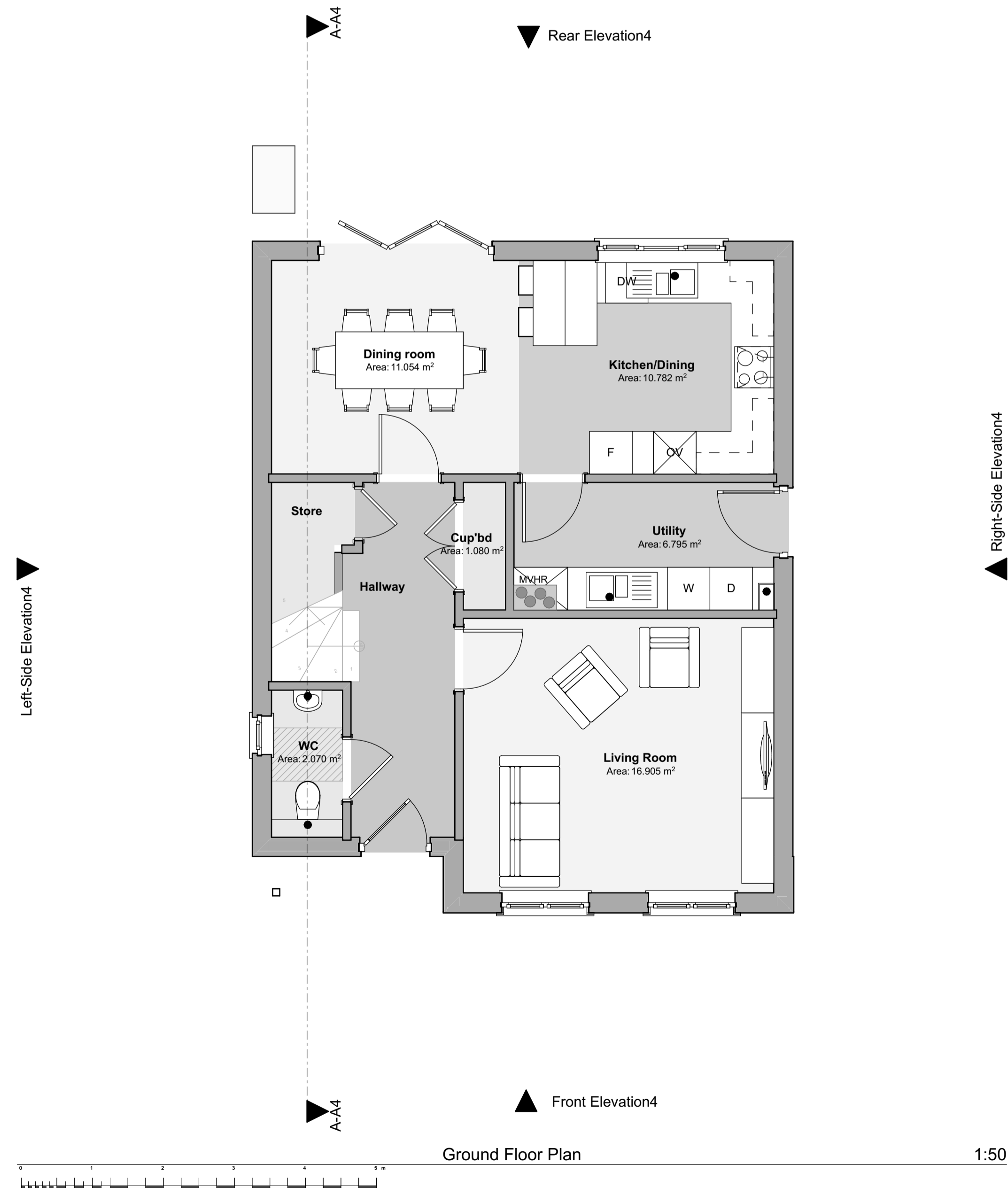
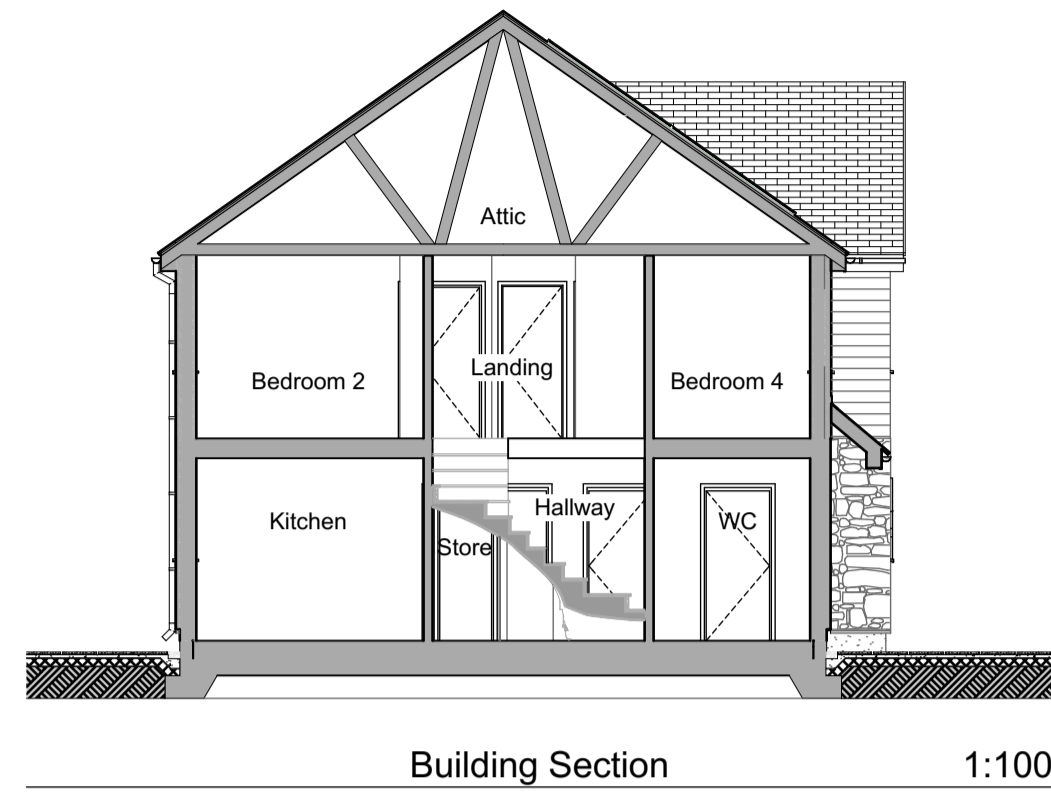
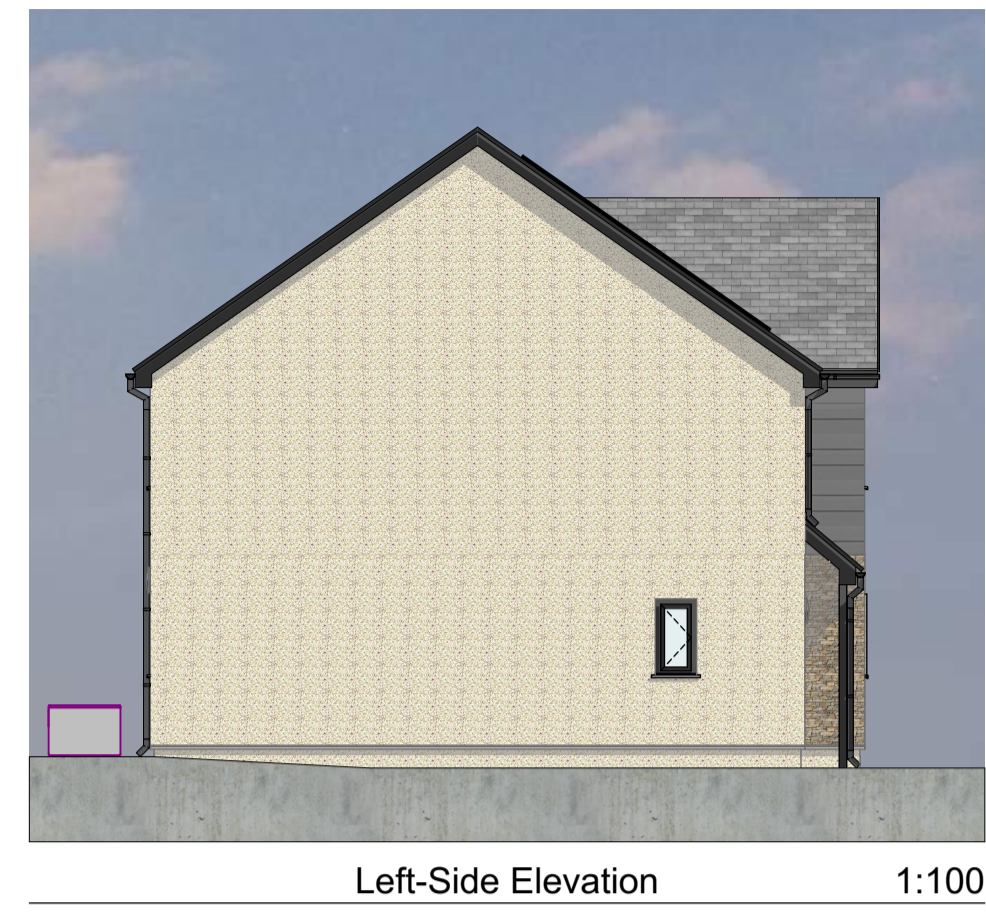
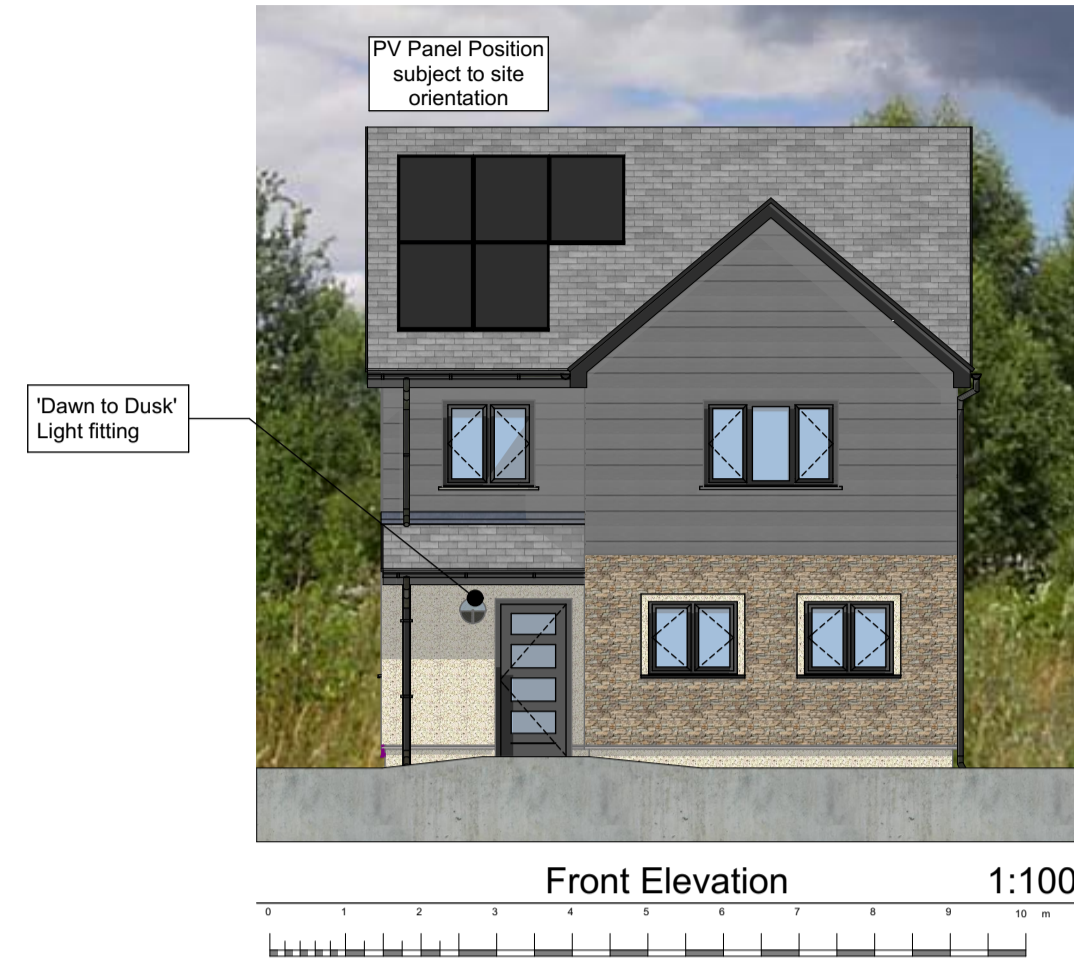
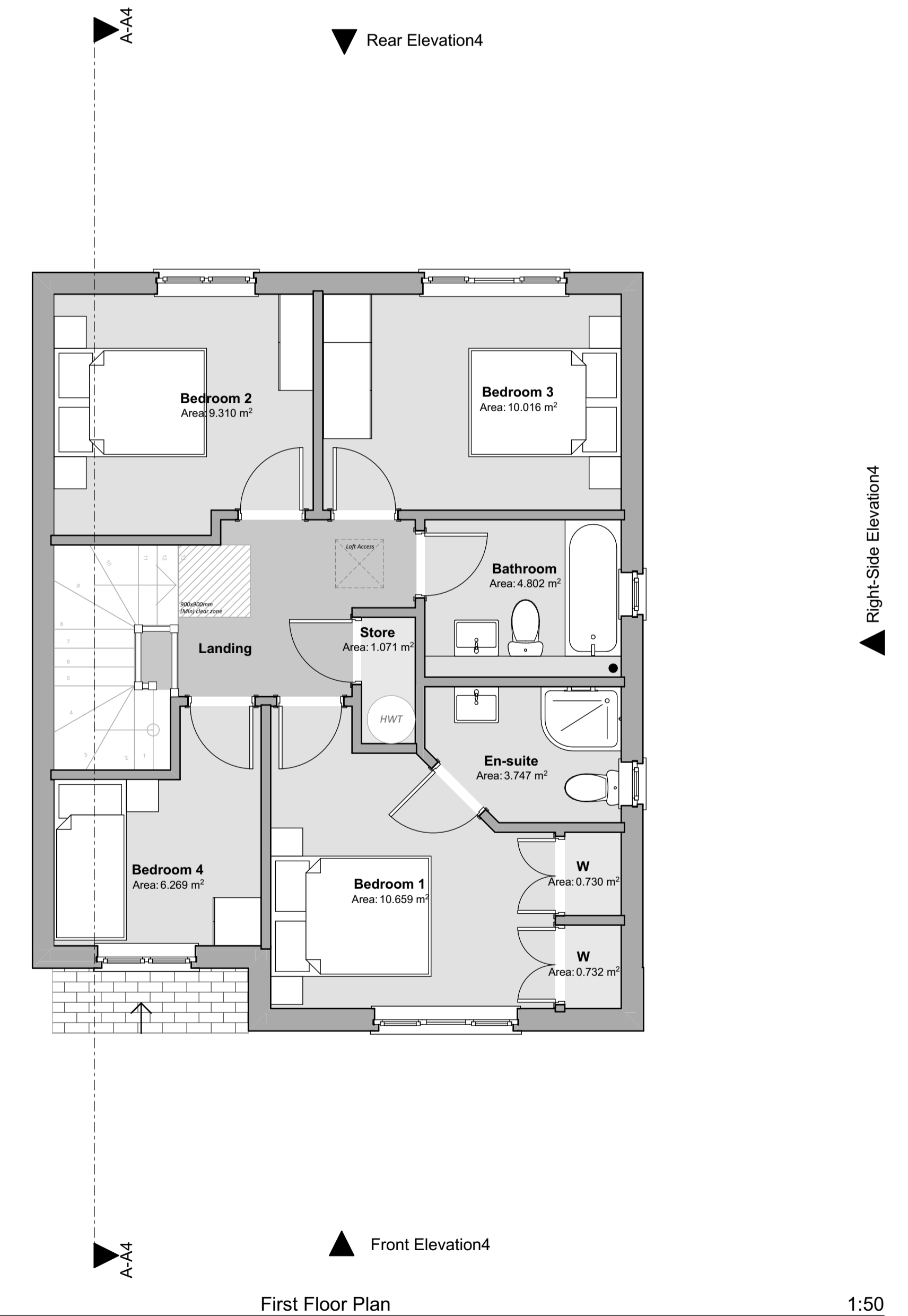


# Proposed Development, Land North of Whitlow, Saundersfoot, SA69 9AE

## 'House Type - E v3' 4 Bedroom Detached House



**Floor Areas:**  
 Gross Internal Ground Floor Area = 78.060m<sup>2</sup> (840.230sqft)  
 Gross Internal First Floor Area = 61.611m<sup>2</sup> (663.164sqft)  
 Total Gross Internal Floor Area = 139.67m<sup>2</sup> (1503.395sqft)



Revision:	Date:	By:	Notes:
REV A - Layout updates following technical design review.	29th November '22	SP/MG	
REV B - General Updates	2nd Feb 2023	SC	