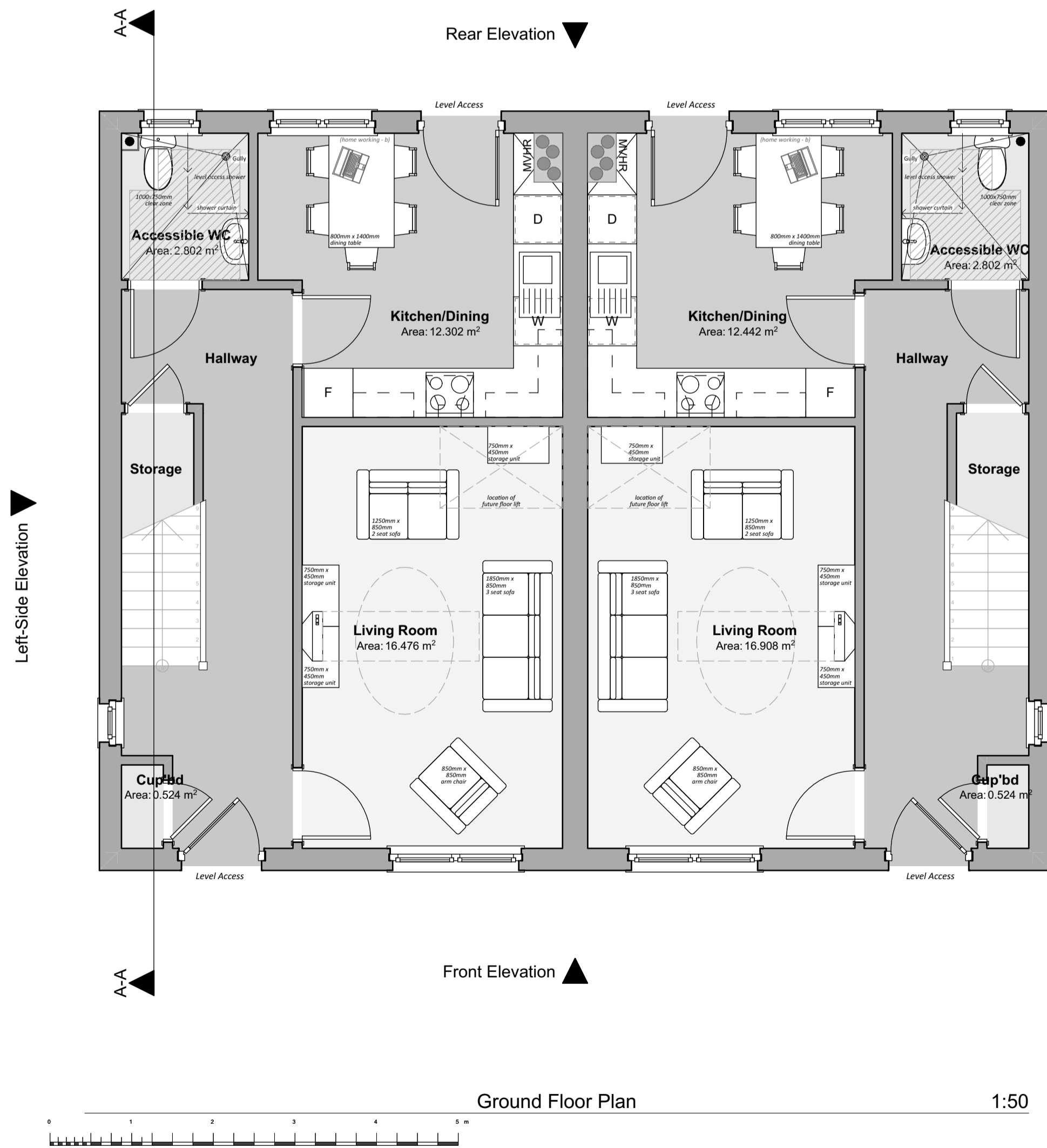
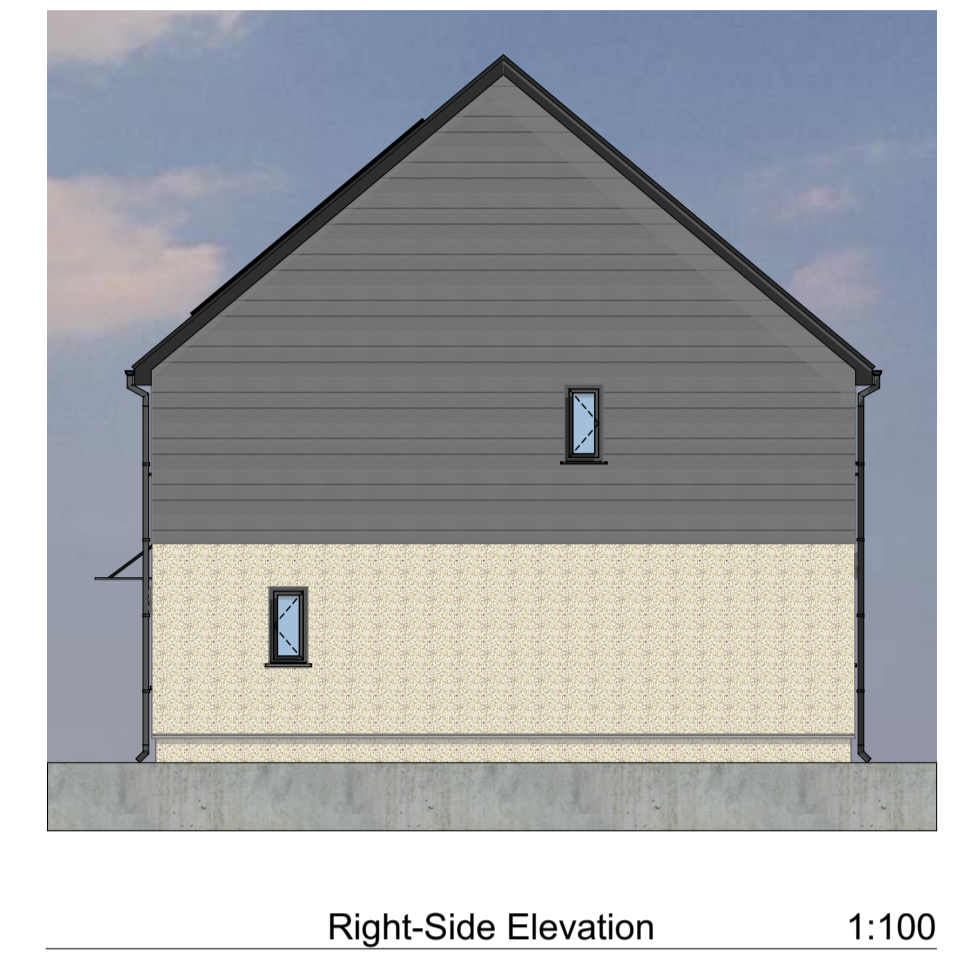


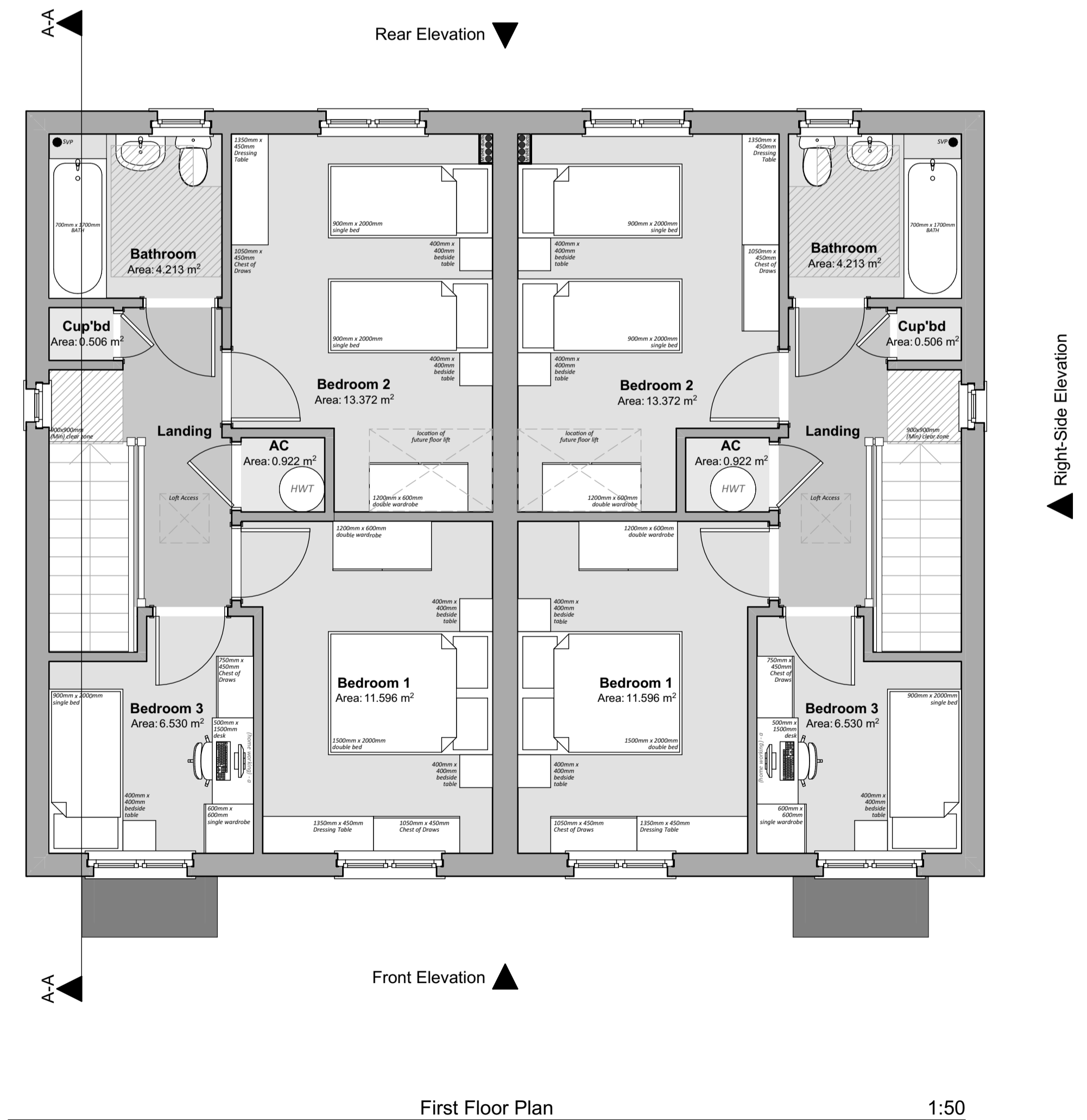
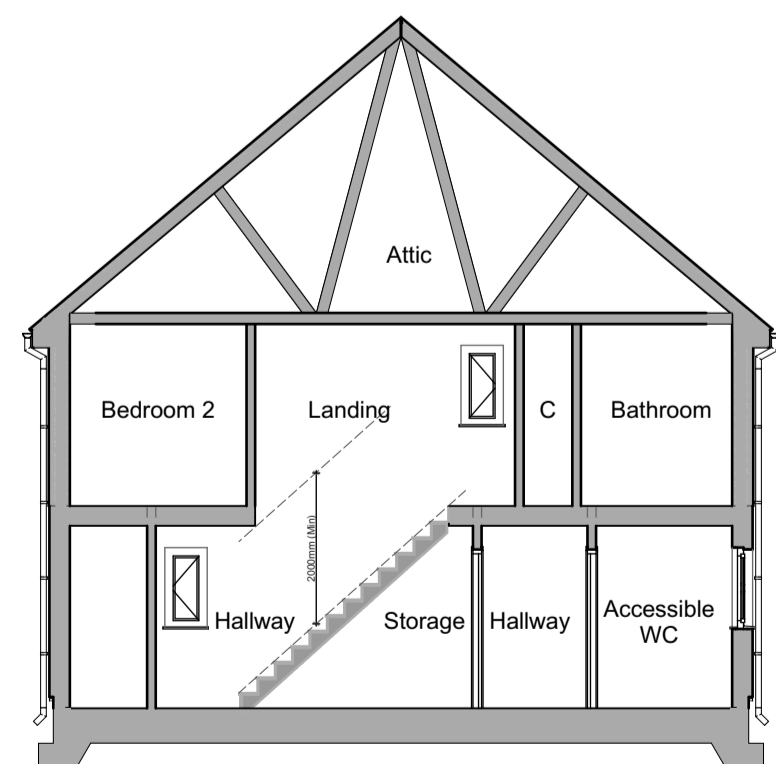
Proposed Development, Land North of Whitlow, Saundersfoot, SA69 9AE

"Planning Drawings" - 5P3B Semi-Detached Affordable House



Floor Areas:
 Total Gross Internal Ground Floor Area = 47.262m² (508.723sqft)
 Total Gross Internal First Floor Area = 47.262m² (508.723sqft)
 Total Gross Internal Area = 94.524m² (1017.446sqft)

Storage Areas:
 [Required Storage Space = 2.5m²]
 Ground Floor Storage Area = 1.63m²
 First Floor Storage Area = 0.97m²
 Total Dwelling Storage Area = 2.60m²



Revision:	Date:	By:	Notes:
REV A - General Updates	2nd Feb 2023	SE	



Client: Morgan Construction Wales Ltd	Scale: Noted Date: Jan '22 Drawn: SE/RH	Drawing Title: PLANNING DRAWINGS - 5P3B AFH Semi Detached House - Floor Plans, Elevations & Section
Job Title: Proposed Development, Land North of Whitlow, Saundersfoot, SA69 9AE	R548 P-24-A	