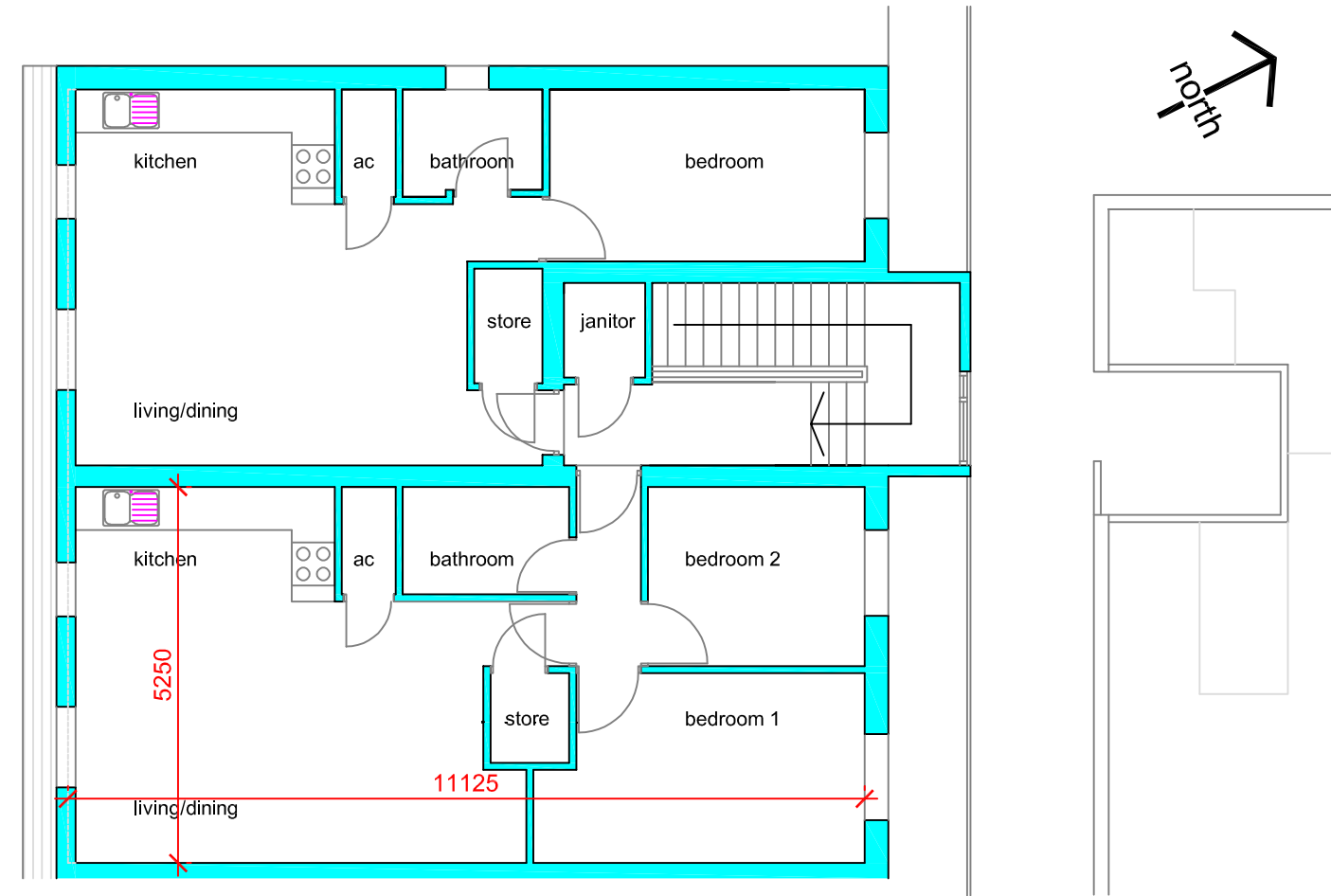
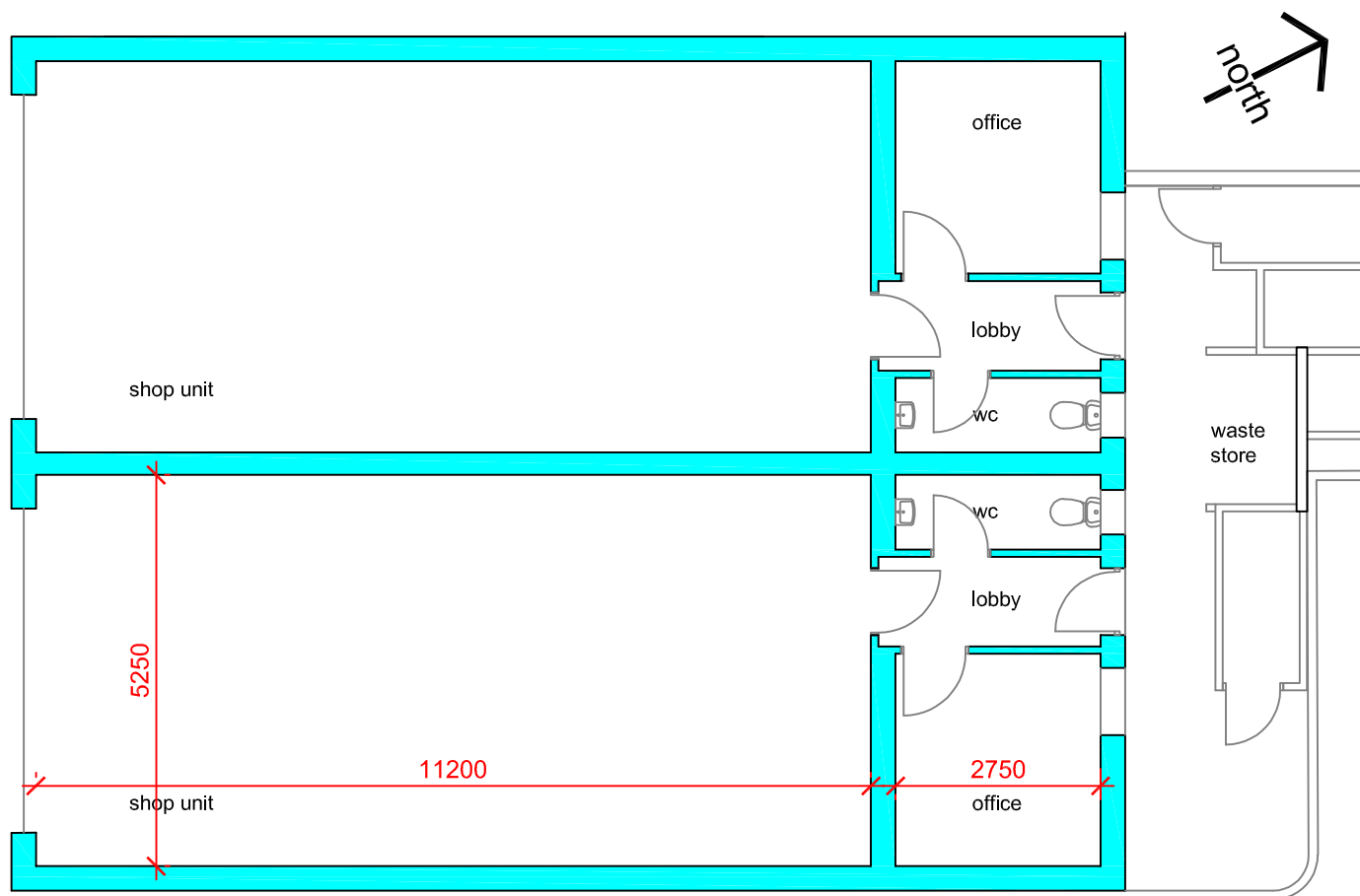


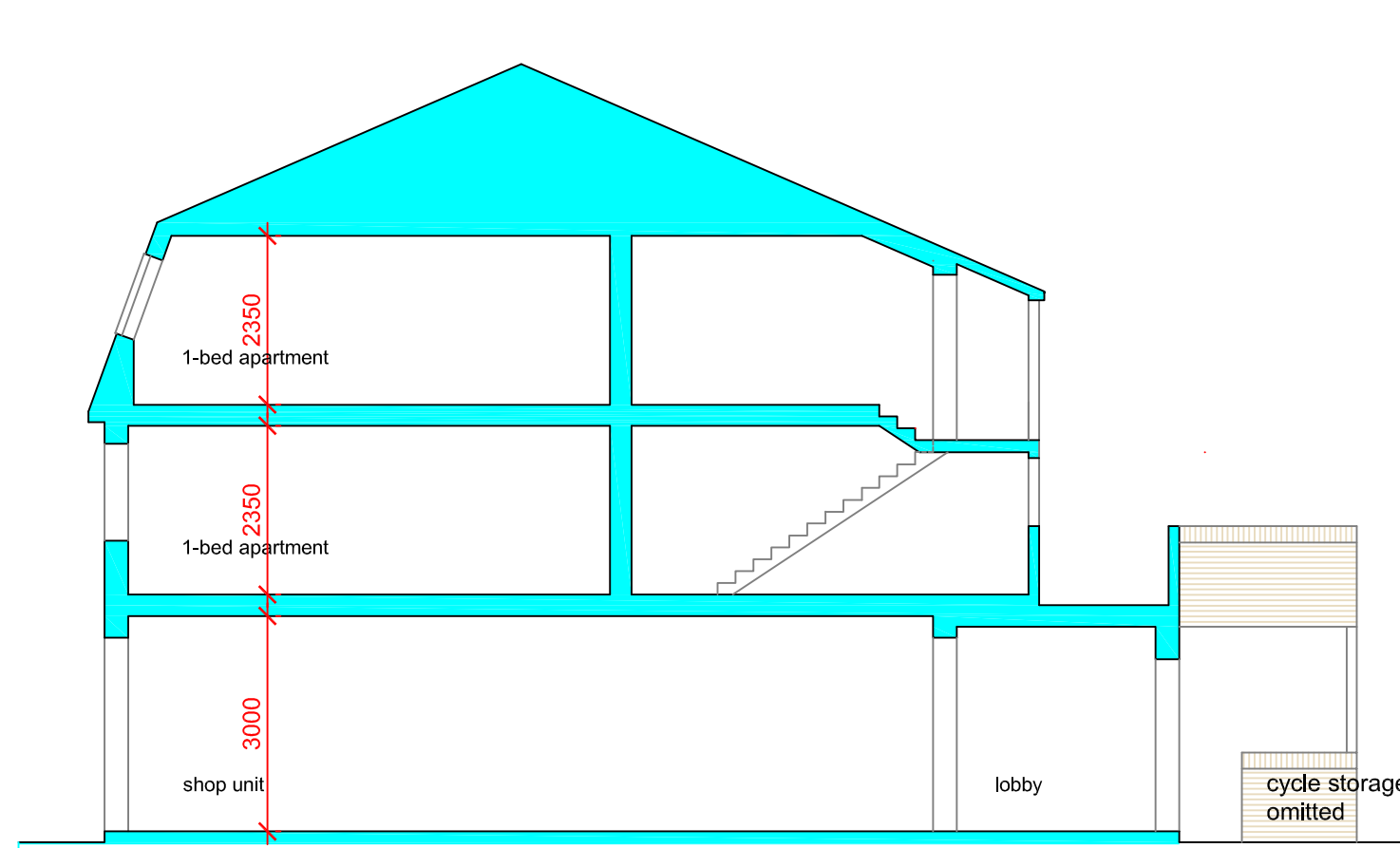
first floor plan (part)



second floor plan (part)



ground floor plan (part)



typical cross-section

Rev A: all units enlarged; roof form revised 22.03.22



Project  
 proposed development at  
 site of Ffaldau Arms Hotel  
 Oxford Street, Pontycymer  
 Drawing title  
 front block - plans & section

Scale: 1:100 Date: 08.21  
 Drawn: mg Checked:  
 Drawing No: 21002/04A  
 The Community Design Team Ltd  
 07906 498641  
 mikegreenwood21@gmail.com