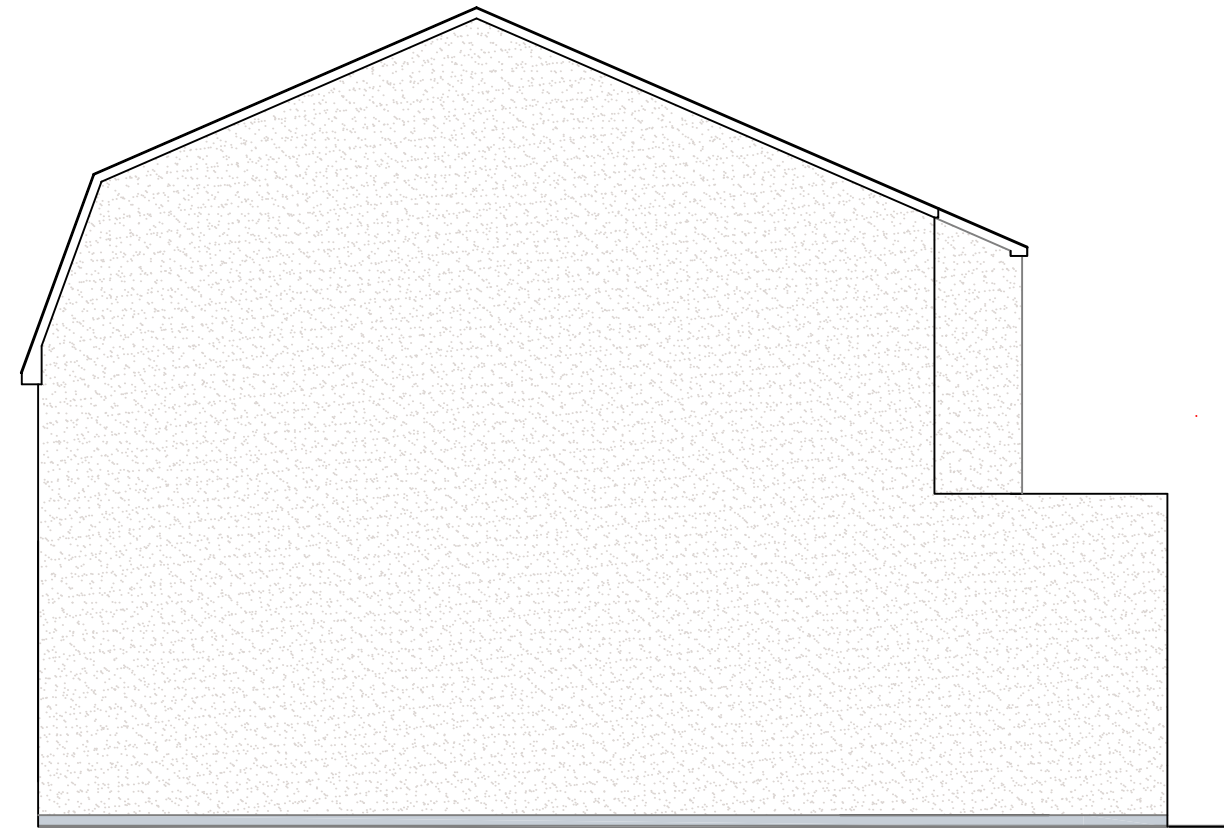




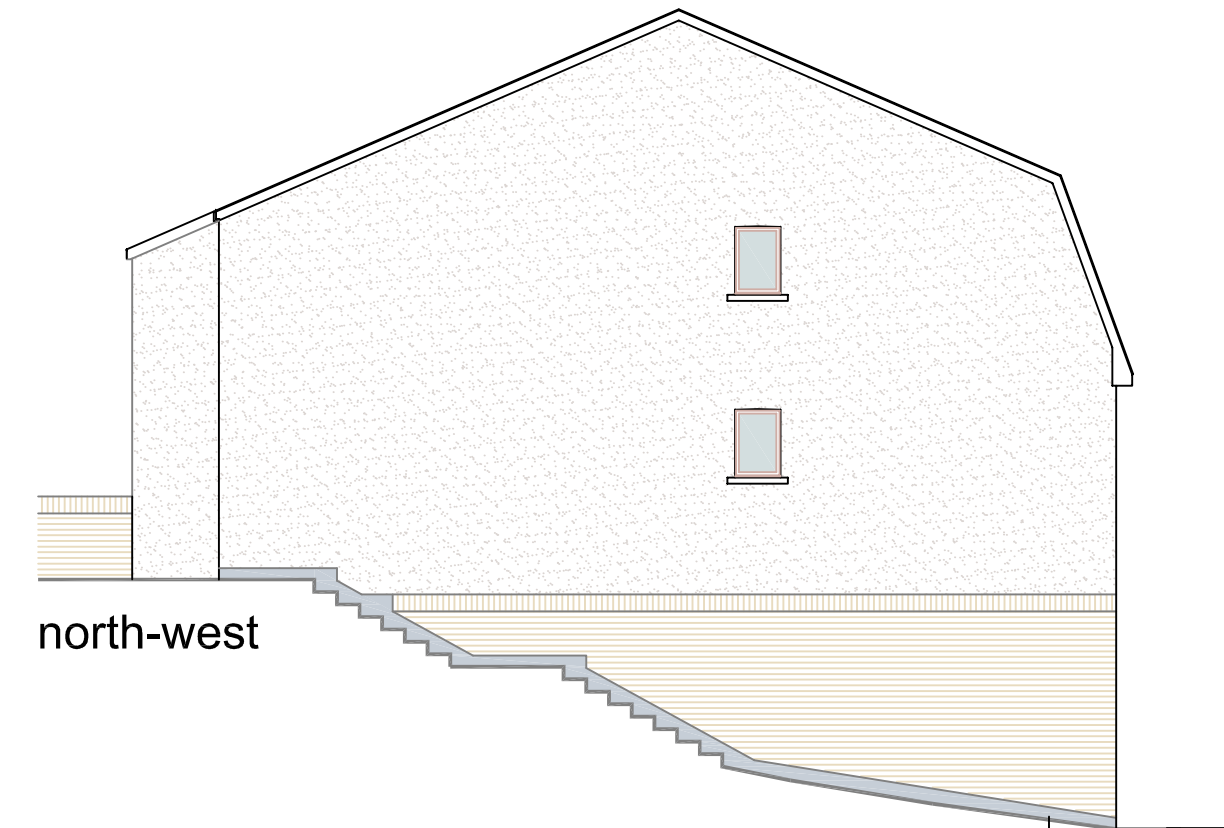
south-west



south-east



north-east



north-west

external materials:

blue-black artificial slate to roofs with white upvc fascias, soffites and barges and grey upvc r/w goods
 polyester powder-coated aluminium frames to shopfronts - colour to be agreed
 plain-face render to upper storeys of external walls with arched heads to window openings; buff-colored facing brickwork to ground/basement storey with brick-on-end lintels: painted p/c conc subcills to all window openings



Project
 proposed development at
 site of Ffaldau Arms Hotel
 Oxford Street, Pontycymer
 Drawing title
 front block - elevations

Scale: 1:100 Date: 05.21
 Drawn: mg Checked:
 Drawing No: 21002/05.2
 The Community Design Team Ltd
 07906 499641
 mikegreenwood21@gmail.com