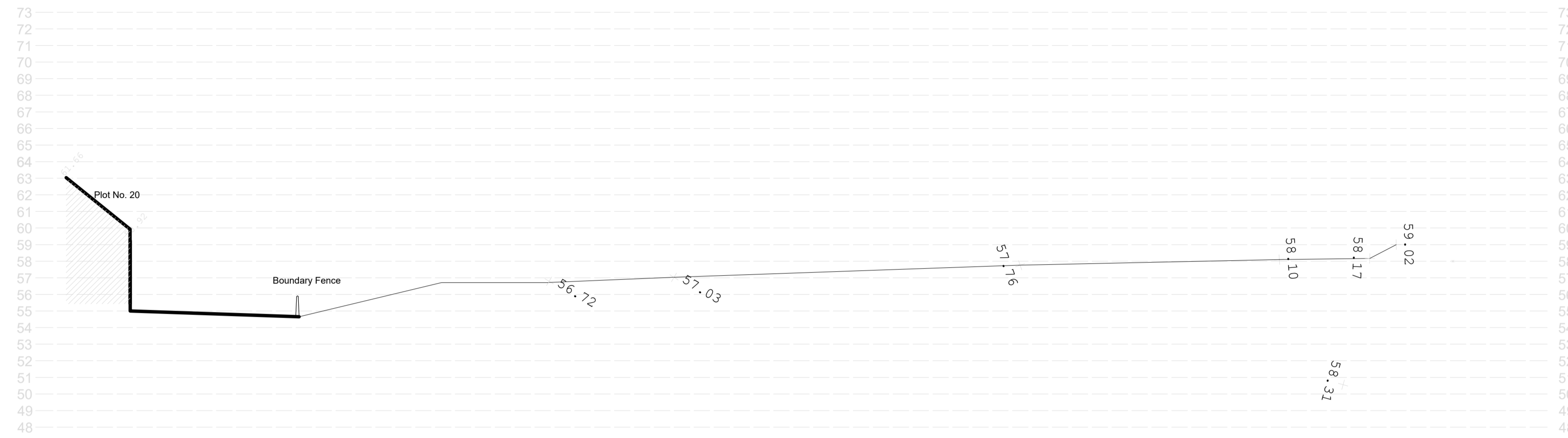
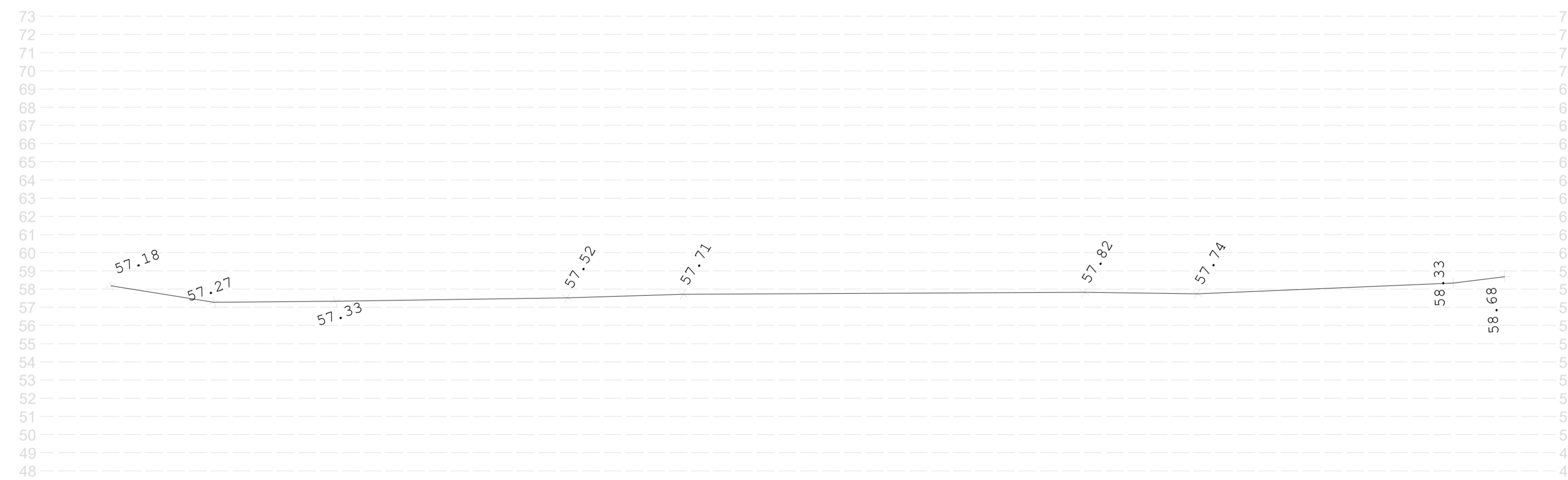
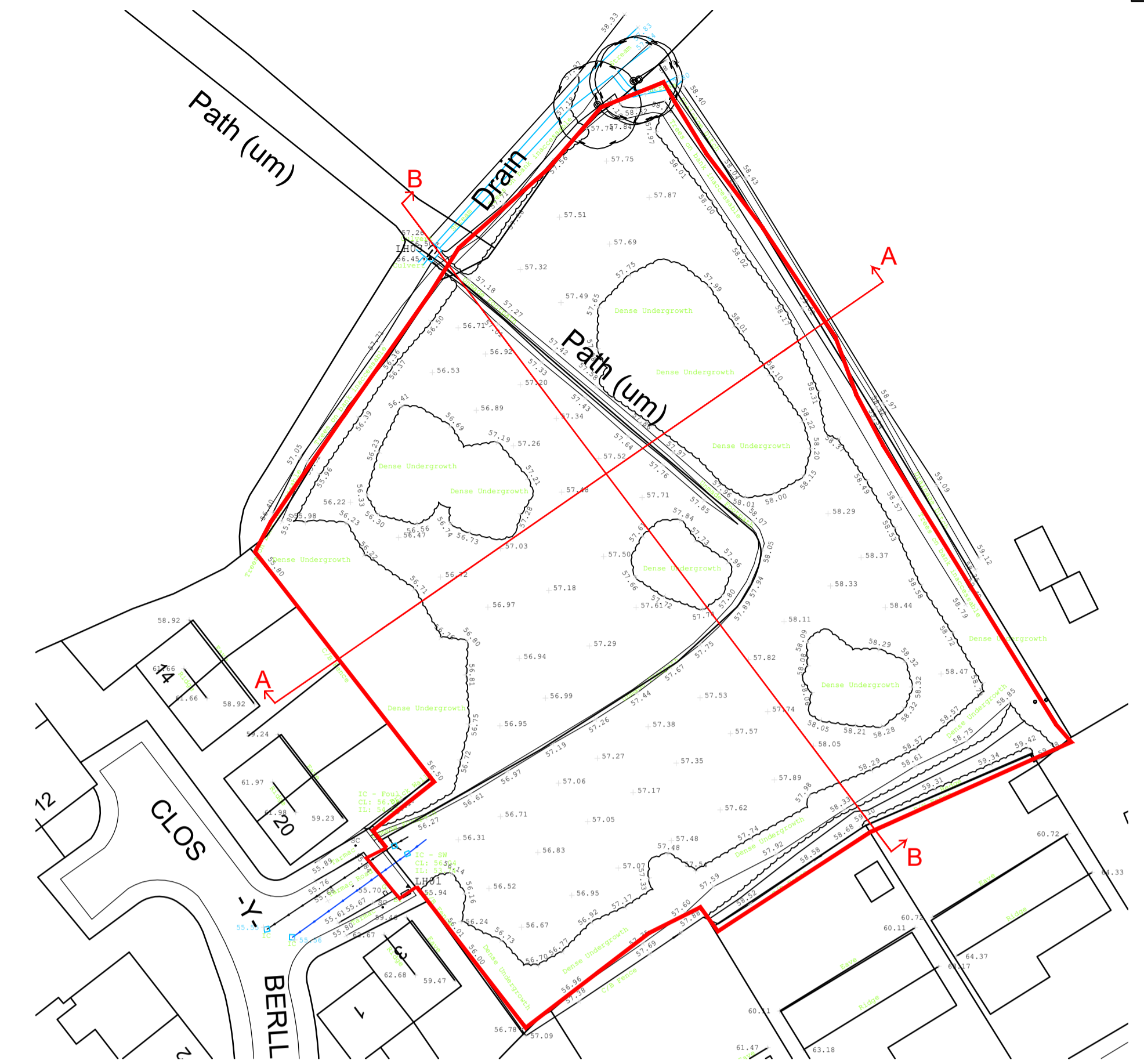


EXISTING SITE SECTIONS



SECTION A-A 1:200



SECTION B-B 1:200

Only use figured dimensions. Any discrepancies must be reported to LEWIS PARTNERSHIP LIMITED. The copyright of this drawing remains the property of LEWIS PARTNERSHIP LIMITED. Lewis Partnership Limited, registered in Wales, reg no. 3913005



13 Park Crescent LLANELLI Carmarthenshire SA15 3AE
01554 777998
enquiries@lewispartnership.co.uk
WWW.lewispartnership.co.uk



Rev	Amendments	Date	Ckd By



Rev	Amendments	Date	Ckd By

Project			
PROPOSED RESIDENTIAL DEVELOPMENT			
Location : Caegar, Penygraig, Llivynhendy.			
Client : T.A.D Builders LTD.			
Project Number	1985	Drawing Number	03
Rev.	-	Scale	1:250
Status	PLANNING		

Title	
EXISTING SITE SECTIONS	
Date Drawn	02/20
By	pjl
Date Checked	
By	
Date	14/02/20
By	rwa

